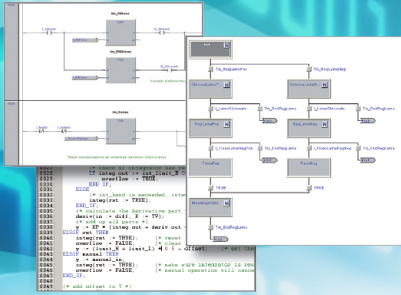


Functionalities



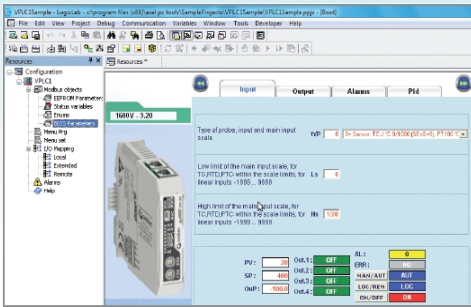
IEC 61131-3

- Instruction List (IL)
- Structured Text (ST)
- Ladder Diagram (LD)
- Function Block Diagram (FBD)
- Sequential Function Chart (SFC)



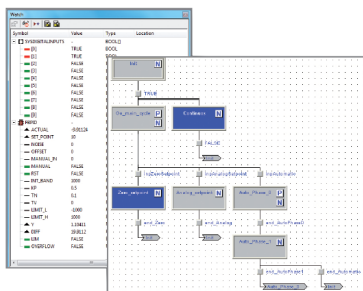
MOTION CONTROL

- PLCOpen Level 1 - Single-Axis
- PLCOpen Level 4 - Multi-Axis
- Kinematics of the most common Robots
- Continuous mode and Buffered mode supported
- Virtual axes supported
- Most common Homing procedures supported
- Graphical configuration of axis and drive



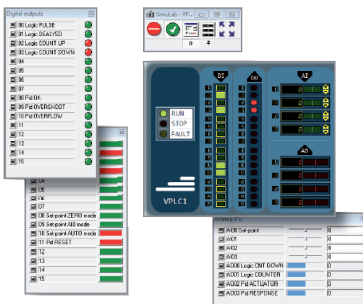
PROJECT

- Graphic system design
- Employment of predefined devices (I/O and Drives)
- Availability of functional and motion libraries
- Integrable PLC Open libraries
- Use of acquired know-how



DEBUG

- Animation of LD and SFC diagrams
- Real-time monitoring of system variables
- Oscilloscope
- Breakpoint and Trigger
- HotSwap (code replacement without power off)



SIMULATION

- Simulation on PC of the system
- Graphic rendering of I/O status
- Variables and input status setting
- Application debug without system connected
- Application debug



Smittec S.p.A.

Via V. Veneto, 4 - 24016 San Pellegrino Terme (BG) ITALY

Tel. +39 0345 40.111 - Fax: +39 0345 40.809 - www.smittec.it

Head office:

Via C. Ceresa, 10 - 24015 San Giovanni Bianco (BG) ITALY

C.F. e P. IVA IT03790400166