

## Smitec RTOS for application development

FLXCore Pack is Smitec's response to the market requirements in terms of flexible and reliable control architectures. It's a complete solution enabling to devise, develop and test different functions depending on the customer's needs.



### Smitec S.p.A.

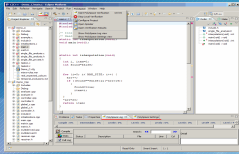
Via V. Veneto, 4 - 24016 San Pellegrino Terme (BG) ITALY  
Tel. +39 0345 40.111 - Fax: +39 0345 40.809 - [www.smitec.it](http://www.smitec.it)

### Head office:

Via C. Ceresa, 10 - 24015 San Giovanni Bianco (BG) ITALY  
C.F. e P. IVA IT03790400166

## FLXCore

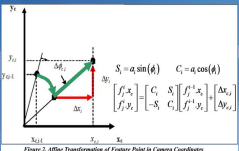
The core of RTOS solution is FLXCore layer, which enables to develop custom RT modules for applications like fieldbus, plc, softplc, motion, diagnostics, statistics and much more. It is also possible to integrate the control and the HMI in one PC, or to remote-control the HMI via Web Server. FLXCore layer is Linux-based with Xenomai extension providing realtime functions.



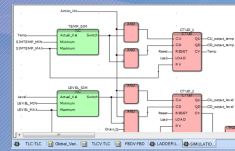
C/C++ code is developed using Eclipse IDE. This solution is the ideal choice for current and future software developments



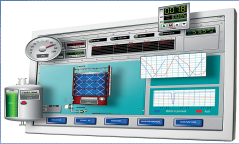
FLXCore simplifies the development of new drivers and enables to manage all most important fieldbus



The concept, study and definition of a new profile/cam has never been so simple: with CamEditor your concepts turn real.



Function Block Diagram  
Structured Text (ST)  
Instruction List (IL)  
Ladder Diagram (LD)  
Sequential Function Chart (SFC)



The flexibility and potential offered by Linux/Xenomai open the possibility to integrate Control and HMI on the same PC.



FLXCore exports a framework allowing for the development of custom RT modules.

## Technical specifications

Architecture	Arm, x86_32/64
S.O.	Linux Debian 6.0
Real time extension	Xenomai 2.6.1
Minimum cycle time	100 us
Bus	Sercos III, Modbus TCP/IP and RTU
Tasks	More than 100 simultaneously

Data here mentioned are subject to changes without any notice.